

PROJECT PROFILE

Central Vacuum System, Sugar Refinery Installation Year: 2012 (Grammercy, LA)

Application Requirements

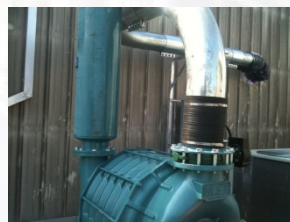
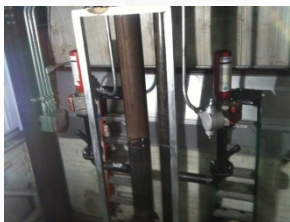
A large sugar supplier in Louisiana had a significant housekeeping problem in their packaging areas. Erichson Company was consulted and the following general needs determined:

- One complete system would be required to cover the areas needed with several hundred feet of tubing and hose.
- Necessary explosion isolation and suppression systems to reduce risks to avoid similar occurrences that happened in other sugar refineries
- Material collection rates of 10,000pph
- The plant decided to dedicate 14 operators per system

Solution

Gardner Denver – Lamson Systems were supplied with the following features:

- Model 876 Heavy Duty Cast Iron Exhauster with 150HP motor
- Pulse Jet Secondary Separator
- Heavy gauge smooth flow tubing and fittings were supplied for durability
- Special explosion resistant rotary valve (10 bar g) was used to prevent flame passage across valve and into downstream equipment
- Suppression and Isolation System was furnished to mitigate the potential from a flame passing back through the vacuum line and into the plant
- Broken bag detection system to monitor particulate emissions
- Grounded hose and tools



Results

The plant has been highly satisfied with the performance and reliability of the central vacuum cleaning system. The system offers a much cleaner and safer work environment. Large amounts of product are now collected and re-processed thus saving the customer money and time.